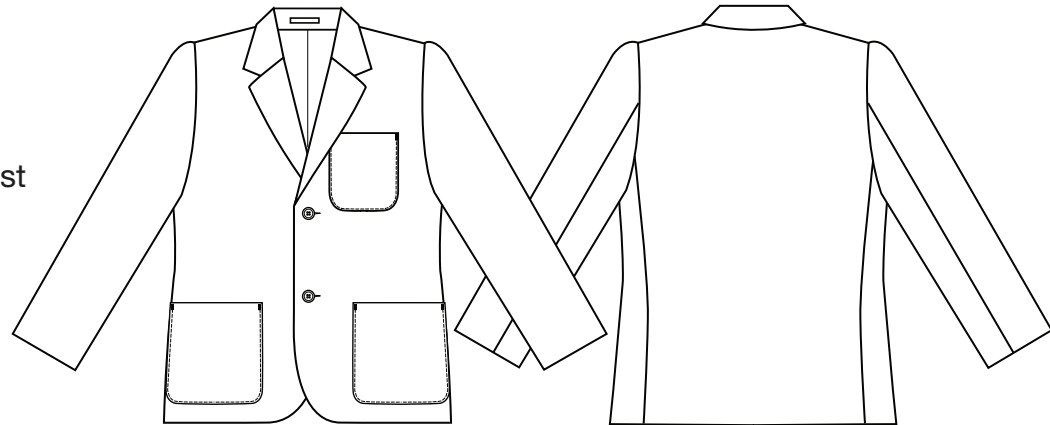


Flannel Boys Zip Entry Blazer- Traditional flannel blazer

Ref: SS10E

- Three patch pockets
- 100% Wool
- Single breasted
- Concealed zip for embroidery access in the chest
- Whole back
- Two inside pockets, one with zip
- Dry clean only
- Sizes 22"- 28" have 3 buttons
- Sizes 29" plus have 2 buttons



Junior-VAT Zero Rated

CHEST"	22	23	24	25	26	27	28	29	30	31	32	33	34
LEEDS	0	1	2	3	4	5	6	7	8	9	10	11	12



Black

Brown

Green

Grey

Maroon

Navy

Royal

